



**India Meteorological Department  
(Ministry of Earth Sciences)**

**SPECIAL MESSAGE NO. 4 (BOB/06/2023)**

**TIME OF ISSUE: 1400 HOURS IST**

**DATED:30.11.2023**

**FROM: INDIA METEOROLOGICAL DEPARTMENT (FAX NO. 24643965/24699216/24623220)**

**TO: CONTROL ROOM, NDM, MINISTRY OF HOME AFFAIRS (FAX.NO. 23093750)**

**CONTROL ROOM NDMA (FAX.NO. 26701729)**

**CABINET SECRETARIAT (FAX.NO.23012284, 23018638)**

**PS TO HON'BLE MINISTER FOR S & T AND EARTH SCIENCES (FAX NO.23316745)**

**SECRETARY, MOES (FAX NO. 24629777)**

**H.Q. (INTEGRATED DEFENCE STAFF AND CDS) (FAX NO. 23005137/23005147)**

**DIRECTOR GENERAL, DOORDARSHAN (23385843)**

**DIRECTOR GENERAL, AIR (23421105, 23421219)**

**PIB MOES (FAX NO. 23389042)**

**UNI (FAX NO. 23355841)**

**D.G. NATIONAL DISASTER RESPONSE FORCE (NDRF) (FAX NO. 26105912, 2436 3260)**

**DIRECTOR, PUNCTUALITY, INDIAN RAILWAYS (FAX NO. 23388503)**

**CHIEF SECRETARY, ODISHA (FAX NO. 0674-2536660)**

**CHIEF SECRETARY, WEST BENGAL (FAX NO. 033-22144328)**

**CHIEF SECRETARY, ANDHRA PRADESH (FAX NO. 0863-2441029, 08645-246600)**

**CHIEF SECRETARY, TAMIL NADU (FAX NO 044-25672304)**

**CHIEF SECRETARY, PUDUCHERRY (FAX NO 0413-2334145)**

**ADMINISTRATOR, ANDAMAN & NICOBAR ISLANDS (FAX NO. 03192- 232656)**

**Sub: Well Marked Low Pressure Area over Southeast Bay of Bengal**

Yesterday's Well Marked Low Pressure Area over Southeast Bay of Bengal & adjoining South Andaman Sea moved west-northwestwards and lay over Southeast Bay of Bengal at 0830 hours IST of today, the 30th November, 2023.

It is likely to move west-northwestwards and intensify into a Depression over southeast Bay of Bengal during next 24 hours. Continuing to move further west-northwestwards, it would intensify gradually into a Cyclonic Storm over Southwest Bay of Bengal around 3<sup>rd</sup> December. Thereafter, it would move northwestwards and reach near North Tamil Nadu and South Andhra Pradesh coasts around early morning of 4<sup>th</sup> December as a cyclonic storm.

**Pre-genesis Track & Intensity Forecasts:**

<b>Date/Time (IST)</b>	<b>Position (Lat. °N/ long. °E)</b>	<b>Maximum sustained surface wind speed (Kmph)</b>	<b>Category of cyclonic disturbance</b>
30.11.23/0530	06.9/89.4	25-35 kmph gusting to 45 kmph	Well Marked Low Pressure Area
30.11.23/1730	07.4/88.5	30-40 kmph gusting to 50 kmph	Well Marked Low Pressure Area
01.12.23/0530	08.2/87.0	40-50 kmph gusting to 60 kmph	Depression
01.12.23/1730	09.0/85.8	45-55 kmph gusting to 65 kmph	Depression
02.12.23/0530	09.8/84.4	50-60 kmph gusting to 70 kmph	Deep Depression
02.12.23/1730	10.7/83.1	55-65 kmph gusting to 75 kmph	Deep Depression
03.12.23/0530	11.5/81.9	60-70 kmph gusting to 80 kmph	Cyclonic Storm

## Warnings:

### (i) Rainfall Warning (graphics enclosed):

- Light to moderate rainfall at most places with **isolated heavy rainfall** is likely over Andaman & Nicobar Islands on 30<sup>th</sup> November & 1<sup>st</sup> December.
- Light to moderate rainfall at most places with **isolated heavy rainfall** is likely over north Coastal Tamil Nadu & Puducherry during 1<sup>st</sup> to 4<sup>th</sup> December with **isolated very heavy rainfall** during 2<sup>nd</sup> to 4<sup>th</sup> December.
- Light to moderate rainfall at most places with **isolated heavy to very heavy rainfall** is likely over south Coastal Andhra Pradesh during 3<sup>rd</sup> to 4<sup>th</sup> December.
- Light to moderate rainfall at most places with **isolated heavy rainfall** is likely over Rayalaseema on 3<sup>rd</sup> & 4<sup>th</sup> December.

### (ii) Wind warning:

- **Andaman Sea and Andaman & Nicobar Islands:**  
**Strong wind** speed reaching **25-35 kmph gusting to 45 kmph** is likely to prevail over South Andaman Sea and adjoining Andaman & Nicobar Islands on 30<sup>th</sup> November.
- **Southeast Bay of Bengal:**  
**Squally weather** with wind speed reaching **40-50 kmph gusting to 60 kmph** is likely to prevail over Southeast Bay of Bengal from 1<sup>st</sup> December morning and likely to increase becoming **50-60 kmph gusting to 70 kmph** on 2<sup>nd</sup> December morning and decrease thereafter.
- **Southwest Bay of Bengal:**  
**Squally wind** speed reaching **40-50 kmph gusting to 60 kmph** is likely over Southwest Bay of Bengal from 1<sup>st</sup> December morning and **50-60 kmph gusting to 70 kmph** from 2<sup>nd</sup> December morning. It would increase becoming **Gale Wind** speed reaching **60-70 kmph gusting to 80 kmph** from 3<sup>rd</sup> December morning for subsequent 24 hours.
- **Westcentral Bay of Bengal:**  
**Squally wind** speed reaching **35-45 kmph gusting to 55 kmph** is likely over westcentral Bay of Bengal from 2<sup>nd</sup> December evening and is likely to increase becoming **45-55 kmph gusting to 65 kmph** from 3<sup>rd</sup> December morning.

### (iii) Sea Condition:

- **Andaman Sea and Andaman & Nicobar Islands:**  
**Moderate to rough sea condition** is likely over South Andaman Sea and adjoining Andaman & Nicobar Islands on 30<sup>th</sup> November.
- **Southeast Bay of Bengal:**  
**Rough to very Rough** Sea condition is likely over Southeast Bay of Bengal during 30<sup>th</sup> November to 2<sup>nd</sup> December.
- **Southwest Bay of Bengal :**  
**Rough to Very Rough to sea condition** is likely from 1<sup>st</sup> December morning becoming **very rough to high** from 3<sup>rd</sup> December morning for subsequent 24 hours.
- **Westcentral Bay of Bengal :**  
**Rough to Very Rough to sea condition** is likely from 2<sup>nd</sup> December evening and becoming **very rough to high** from 3<sup>rd</sup> December morning onwards.

**(iv) Fishermen Warning (graphics attached):**

Fishermen are advised not to venture into:

- South Andaman Sea on 30<sup>th</sup> November.
- Southeast Bay of Bengal during 30<sup>th</sup> November to 2<sup>nd</sup> December.
- Southwest Bay of Bengal during 1<sup>st</sup> to 4<sup>th</sup> December.
- Westcentral Bay of Bengal from 2<sup>nd</sup> December morning to 5<sup>th</sup> December.

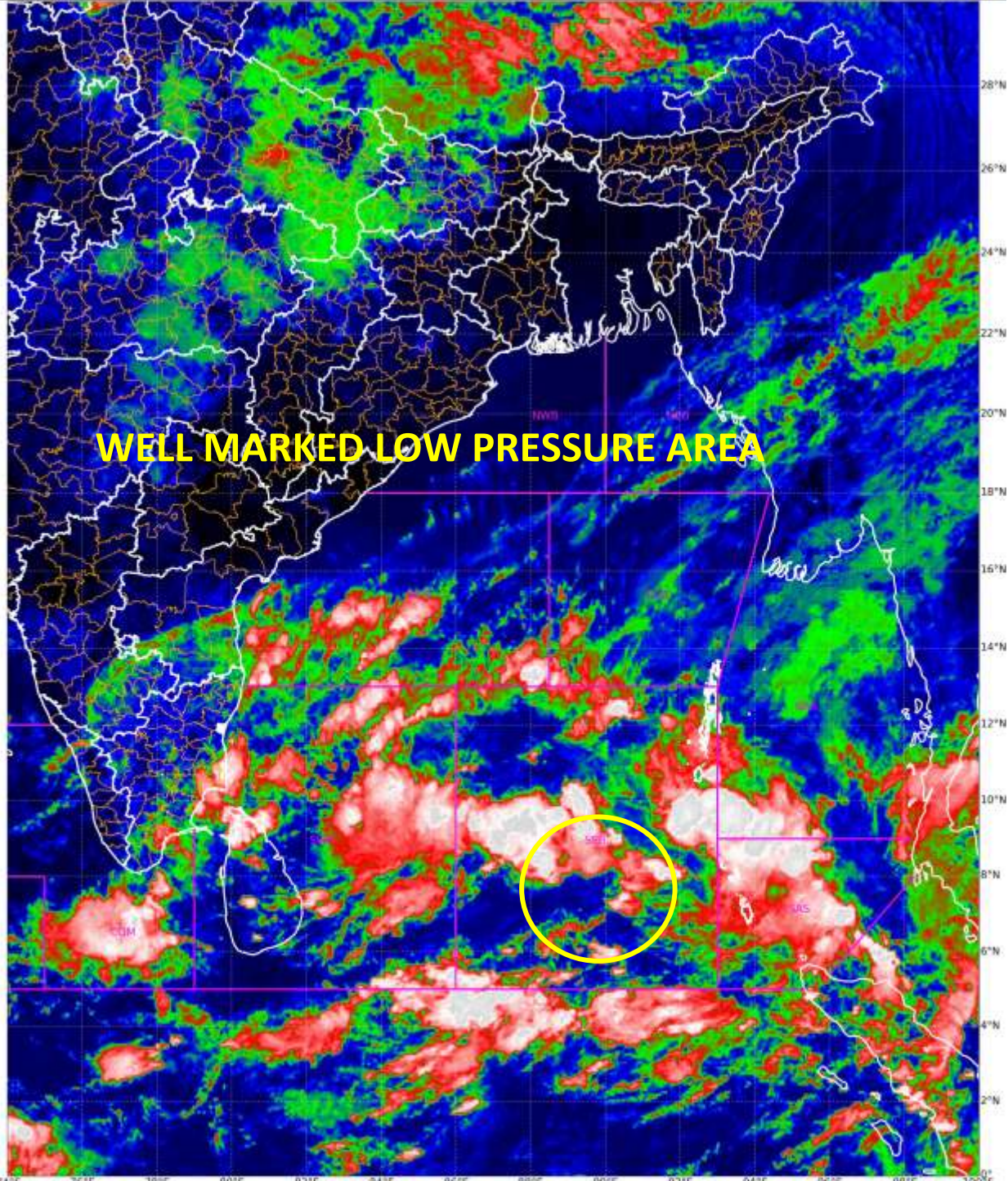
The Fishermen out at sea are advised to return to Andaman & Nicobar Islands and those off east coast of India (from Tamil Nadu coast to Odisha coast) are advised to return to coast by 1<sup>st</sup> December.

**The system is under continuous surveillance and the next message will be issued at 1130 hours IST of tomorrow, the 1<sup>st</sup> December, 2023.**

**(Ananda Kumar Das)**

**Scientist F, Cyclone Warning, New Delhi**

*Copy to: ACWC Mumbai/ ACWC Chennai/ ACWC Kolkata/ CWC Ahmedabad/ CWC  
Bhubaneswar/ CWC Vishakhapatnam/ CWC Thiruvananthapuram/ MC Goa*



**WELL MARKED LOW PRESSURE AREA**







**PREGENESIS TRACK FORECAST ALONGWITH CONE OF UNCERTAINTY IN ASSOCIATION WITH WELL MARKED LOW PRESSURE AREA OVER SOUTHEAST BAY OF BENGAL BASED ON 0300 UTC (0830 IST) OF 30<sup>TH</sup> NOVEMBER 2023.**



DATE/TIME IN UTC  
IST=UTC + 0530  
L: LOW PRESSURE AREA  
WML: WELL MARKED LOW PRESSURE AREA  
D: DEPRESSION (17-27 KT)  
DD: DEEP DEPRESSION (28-33 KT)  
CS: CYCLONIC STORM (34-47 KT)  
SCS: SEVERE CYCLONIC STORM (48-63KT)  
VSCS: VERY SEVERE CYCLONIC STORM (64-89 KT)  
ECS: EXTREMELY SEVERE CYCLONIC STORM (90-119 KT)  
SuCS: SUPER CYCLONIC STORM (≥ 120 KT)

-  LESS THAN 34 KT
-  34-47 KT
-  ≥ 48 KT
-  OBSERVED TRACK
-  FORECAST TRACK
-  CONE OF UNCERTAINTY



**PREGENESIS TRACK FORECAST ALONG WITH QUADRANT WIND DISTRIBUTION IN ASSOCIATION WITH WELL MARKED LOW PRESSURE AREA OVER SOUTHEAST BAY OF BENGAL BASED ON 0300 UTC (0830 IST) OF 30<sup>TH</sup> NOVEMBER 2023.**



DATE/TIME IN UTC

IST=UTC + 0530

L: LOW PRESSURE AREA

WML: WELL MARKED LOW PRESSURE AREA

D: DEPRESSION (17-27 KT)

DD: DEEP DEPRESSION (28-33 KT)

CS: CYCLONIC STORM (34-47 KT)

SCS: SEVERE CYCLONIC STORM (48-63KT)

VSCS: VERY SEVERE CYCLONIC STORM (64-89 KT)

ESCS: EXTREMELY SEVERE CYCLONIC STORM (90-119 KT)

SuCS: SUPER CYCLONIC STORM (≥ 120 KT)

● LESS THAN 34 KT

○ 34-47 KT

● ≥ 48 KT

— OBSERVED TRACK

— FORECAST TRACK

▲ CONE OF UNCERTAINTY

AREA OF MAXIMUM SUSTAINED WIND SPEED:

■ 28-33 KT (52-61 KMPH)

■ 34-49 KT (62-91 KMPH)

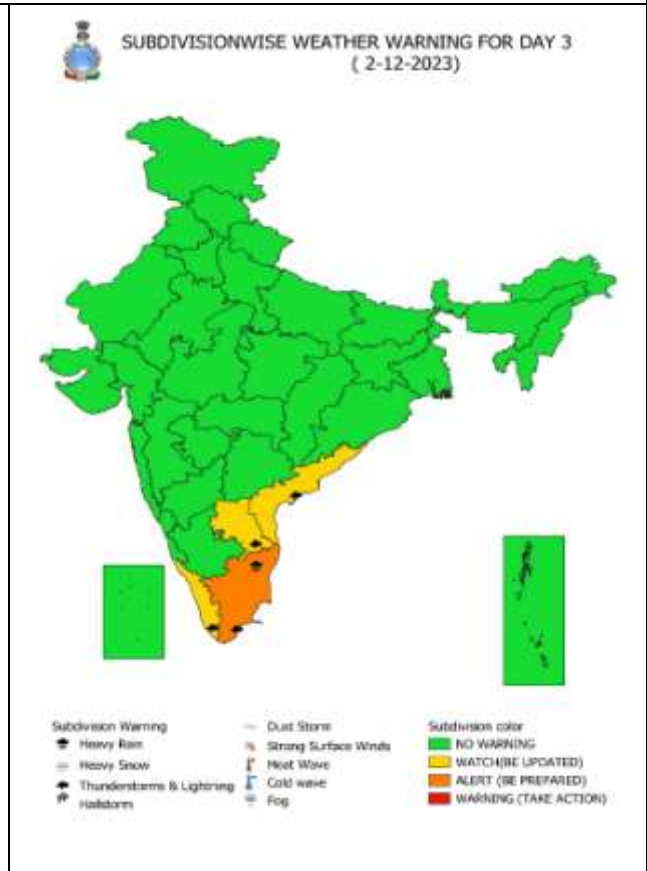
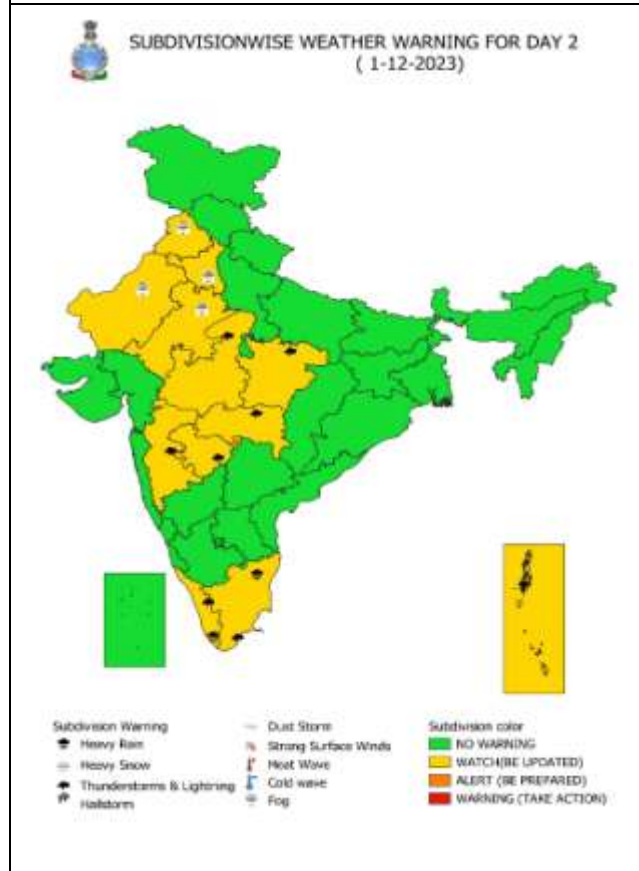
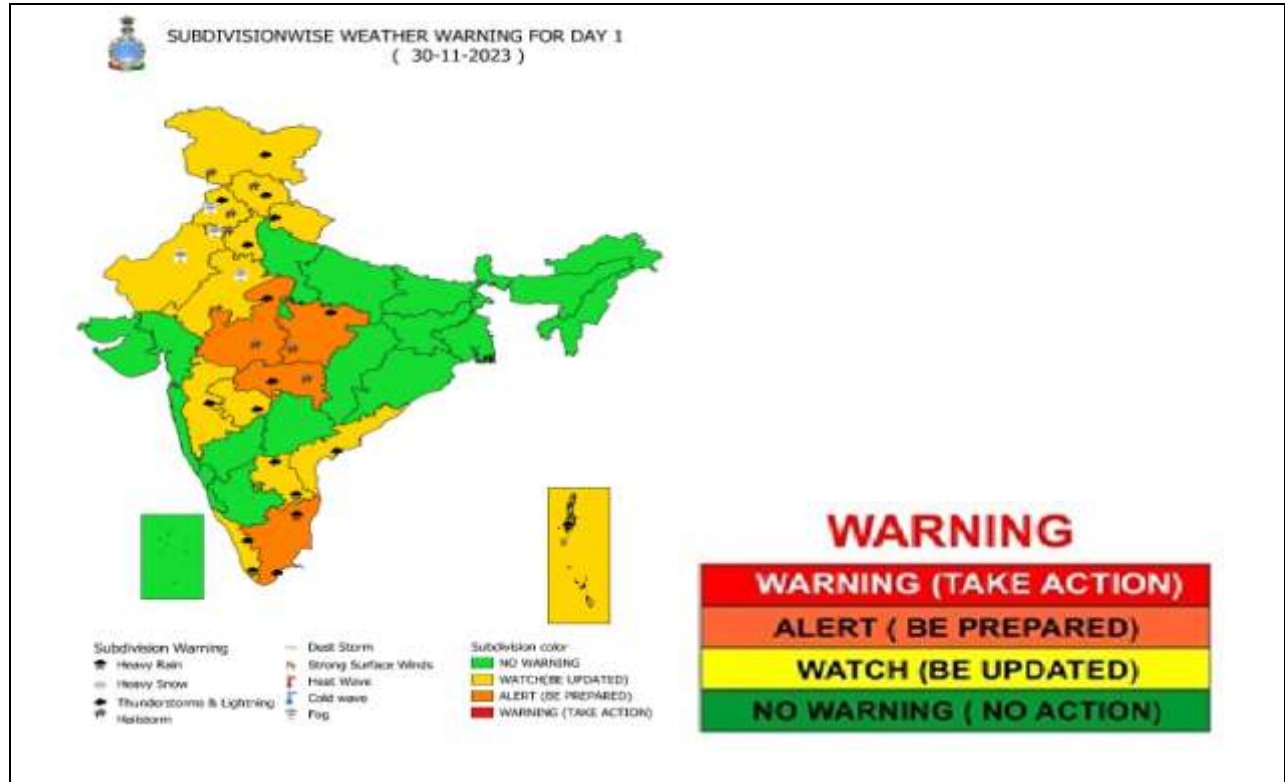
■ 50-63 KT (92-117 KMPH)

■ ≥ 64 KT (≥118 KMPH)

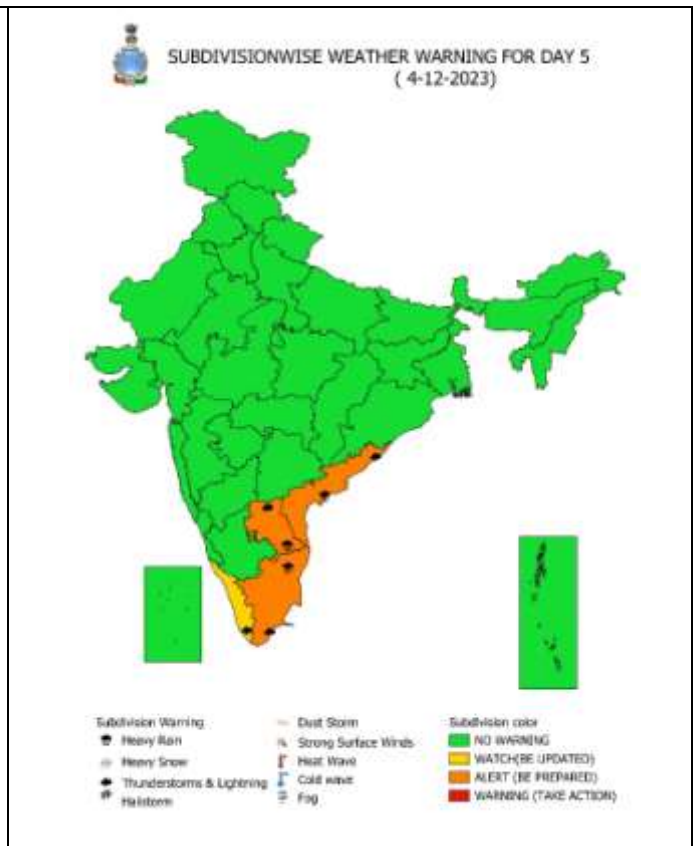
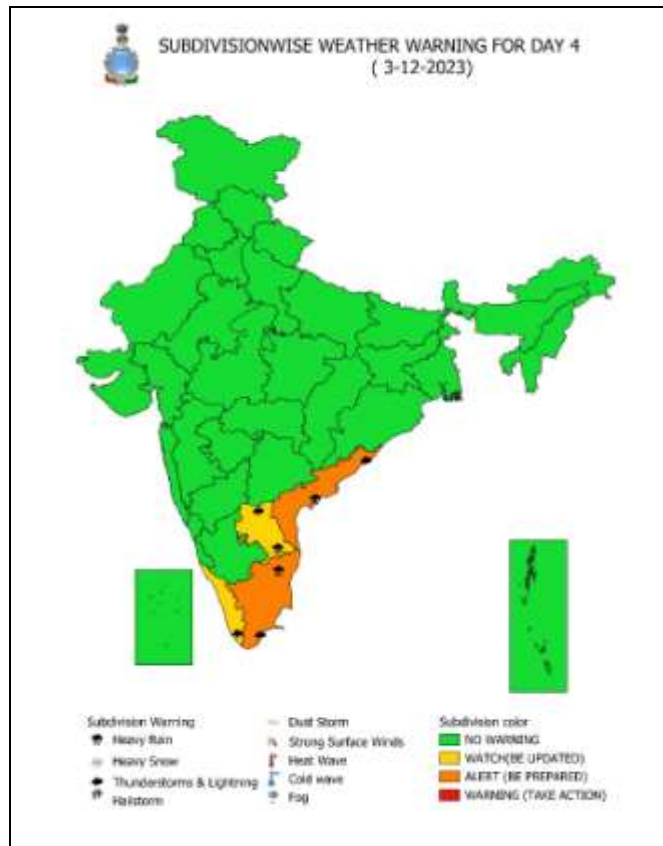
**IMPACT OVER THE SEA**

MSW (knot/kmph)	Impact	Action
28-33 (52-61)	Very rough seas	Total suspension of fishing operations
34-49 (62-91)	High to very high seas	Total suspension of fishing operations
50-63 (92-117)	Very high seas	Total suspension of fishing operations
≥ 64 (≥118)	Phenomenal	Total suspension of fishing operations

# Weather Warning Graphics







- |                     |                   |                     |                     |
|---------------------|-------------------|---------------------|---------------------|
| <b>Heavy Rain</b>   | <b>Heavy Snow</b> | <b>Thunderstorm</b> | <b>Dust Storm</b>   |
| <b>Strong Winds</b> | <b>Visibility</b> | <b>Cyclone</b>      | <b>Squall/ Hail</b> |
| <b>Frost</b>        | <b>Cold Wave</b>  | <b>Heat Wave</b>    | <b>Sea State</b>    |



## Fishermen warning graphics

**Day 1: 30.11.2023/11:30AM to 01.12.2023/05:30AM**



**Day 2: 01.12.2023/05:30AM to 02.12.2023/05:30AM**



**Day 3: 02.12.2023/05:30AM to 03.12.2023/05:30AM**



**Day 4: 03.12.2023/05:30AM to 04.12.2023/05:30AM**



**Day 5: 04.12.2023/05:30AM to 05.12.2023/05:30AM**



Squally WX with wind speed 40-45 kmph gusting to 55 kmph

Squally WX with wind speed 45-55 kmph gusting to 65 kmph

Squally wind with speed 50-60 kmph gusting to 70 kmph

CS with Gale wind speed 60-90 kmph gusting to 110 kmph

**Fishermen are advised not to venture into the marked areas.**